

LIFFEY MEETING ROOM 2

ROOM SPECIFICATIONS

Size	107m ²
Minimum height	3.25m
Maximum height	3.25m
AV control room	0
Divisible	Yes
Windows	Yes
Hanging Points	No

ROOM CAPACITIES

Boardroom	40
Theatre	143
Banqueting*	80
Cabaret	56
Classroom	50

TECHNICAL PACKAGE

WiFi	Yes
AV	Yes
Stage	On request
Sound	Yes
Lights	On request

ABOUT THE ROOM

Located on Level 1, large windows flood this meeting room with natural light and give wonderful views of Dublin's skyline. Offering a great degree of flexibility, this room also divides into Liffey Meeting Room 2a and Liffey Meeting Room 2b.

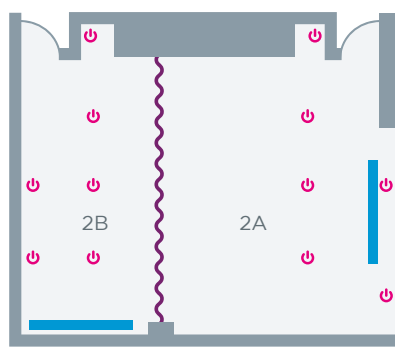
All our meeting rooms come complete with high-spec integrated screens and projectors, together with multiple power points for laptops. Each meeting room also has its own control panel giving you the ability to adjust the room's lighting and pull down blackout or sun-blinds without having to call for assistance.

Offering the perfect setting for board meetings, training sessions, interviews, supplier meetings and private banquets, this room is also ideal for hosting break-out sessions at larger events.

ROOM VIEW



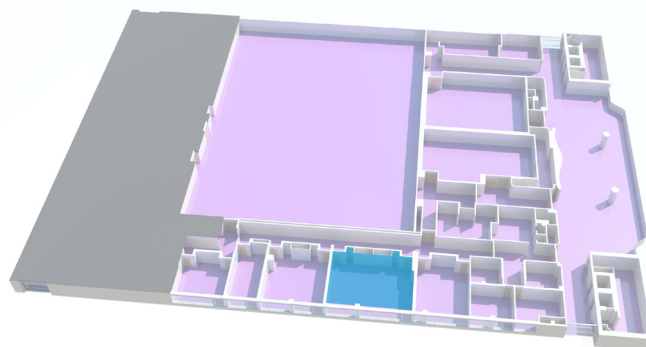
ROOM PLAN



Key

- Power Access
- Integrated Screen
- Window
- Removable Wall

FLOOR PLAN - LEVEL 1



PLEASE NOTE

You may need additional Wi-Fi and power depending on your event's requirements. Your Event or Technical Production Manager will be happy to provide you with recommendations and quotes. This floor plan is to be used as a guide only, please contact your Event or Technical Production Manager for more detailed information and plans.

*Banqueting capacities are based on oval tables of ten without a stage.